

3856



AMERICAN WAVE MACHINES

AMERICAN **WAVE** MACHINES

THE FUTURE OF SURFING



SURFSTREAM.COM





SURFSTREAM



ONE MACHINE MANY WAVES

DEEP WATER STANDING WAVE MODE

Modular insert

Reforming spoiler wave, oscillates
between green water face and
whitewater roller

Pitching option

Ideal for bodyboarding & surfing
up to 10 riders at once

SURF TRAINING WAVE MODE

Permanent feature

Basic surfing wave

Great for lessons

Fun for advanced surfers

Multiple surfers at once

BARRELING WAVE MODE

Modular insert—left or right breaking

Advanced surfing wave

Ideal for surfing events &
competitions







THE ULTIMATE SURF MACHINES

Authentic Surfing Experience

- Real surfboards with fins
- Deep cushion of water moving at natural speeds
- Skills that transfer to the ocean and rivers

Fully Adjustable

- State of the art programmed controls – options include left or right break, barrel, pitching, whitewater, reforming

Anyone Can Surf

- Beginners to pros
- Multiple riders at once

ABOUT AMERICAN WAVE MACHINES

THE FUTURE OF SURFING

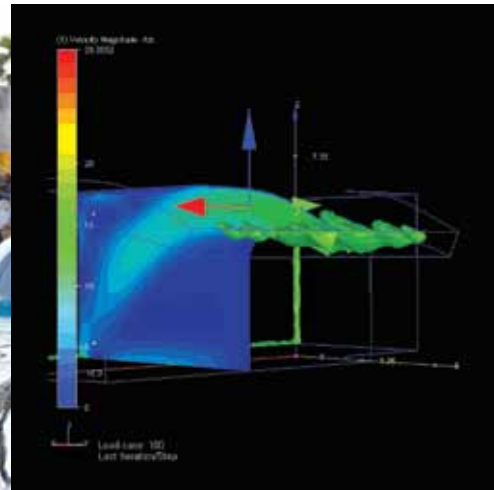
Whether for surf parks, waterparks, or cutting-edge research institutions, AWM is driven by an innovation imperative. With a legacy and deep roots in the surfing tradition AWM is committed to developing and producing only the highest quality wave systems. AWM's product development approach requires flexibility, a seasoned, multi-disciplined team, and frequent use of prototyping to verify analytically derived data. The result: perfect waves and an authentic surfing experience.



AWM founder's Uncle "Sonny" Charles Wright, the first US national surfing champion, in Mission Beach, CA, 1925, with his 130-pound redwood longboard



AWM Founder and President Bruce McFarland



CFD generated results for AWM proprietary wave pool design

AMERICAN WAVE MACHINES TECHNOLOGY



AN INNOVATOR IN ARTIFICIAL WAVE TECHNOLOGY

AWM delivers direct conceptual, design, engineering, supply, and installation of every available artificial surf technology category to the hotel resort, waterpark, and surf park markets. Its patented SurfStream®, the world's first standing wave machine, is a technology breakthrough that delivers real surfing and wave riding capabilities. The company also offers PerfectSwell™ wave and surf pools, the first pneumatic wave generating systems that create waves that behave like wind generated swells in the ocean.

PATENTS

Scope of work is done so under U.S. Patents, other patents pending 6,019,547 6,336,771 6,629,803 6,932,541 7,326,001 7,568,859 7,815,396



AMERICANWAVEMACHINES

224C South Cedros Ave. Solana Beach, CA 92075

858.755.1497

info@surfstream.com

www.surfstream.com

Whether your venue is in Manhattan Beach, California or Manhattan, Kansas, let your customers be immersed in the surf with the full range of AWM custom surf equipment and watch your revenue go through the roof!

SURFBOARDS



Standard 4'11" Black Ball Beater



AWM Custom Epoxy Thruster



Chopstick

Mullet

Neutron

AWM Custom Shapes

BODYBOARDS



HELMETS



RASHGUARDS

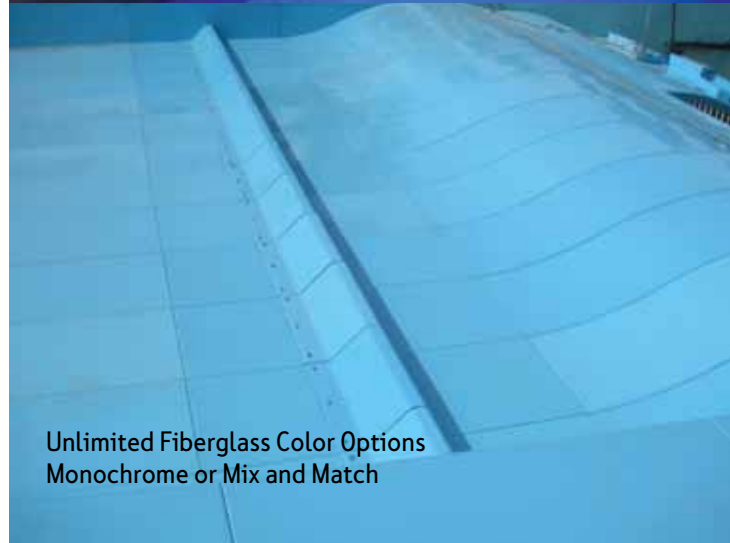


SURFSTREAM COLOR OPTIONS

 Grey White RAL 9002	 Signal White RAL 9003	 Pure White RAL 9010	 Ivory RAL 1014	 Light Ivory RAL 1015	 Sand Yellow RAL 1002
 Signal Yellow RAL 1003	 Lemon Yellow RAL 1012	 Sulfur Yellow RAL 1016	 Traffic Yellow RAL 1023	 Pastel Yellow RAL 1034	 Traffic Orange RAL 2009
 Deep Orange RAL 2011	 Vermilion RAL 2002	 Flame Red RAL 3000	 Strawberry Red RAL 3018	 Ruby Red RAL 3003	 Red Lilac RAL 4001
 Heather Violet RAL 4003	 Blue Lilac RAL 4005	 Telemagenta RAL 4010	 Ochre Brown RAL 8001	 Copper Brown RAL 8004	 Orange Brown RAL 8023
 Ral Design RAL 220 80 20	 Azure Blue RAL 5009	 Gentian Blue RAL 5010	 Light Blue RAL 5012	 Cobalt Blue RAL 5013	 Sky Blue RAL 5015
 Traffic Blue RAL 5017	 Night Blue RAL 5022	 Turquoise Blue RAL 5018	 Water Blue RAL 5021	 Light Green RAL 6027	 Mint Turquoise RAL 6033
 Leaf Green RAL 6002	 Grass Green RAL 6010	 Turquoise Green RAL 6016	 Yellow Green RAL 6018	 Pastel Green RAL 6019	 Pale Green RAL 6021
 Signal Green RAL 6032	 Ral Design RAL 110 80 40	 Concrete Grey RAL 7023	 Pebble Grey RAL 7032	 Silver Grey RAL 7001	 Jet Black RAL 9005



Light Effects with LEDs



Unlimited Fiberglass Color Options
Monochrome or Mix and Match

AMERICAN **WAVE** MACHINES

224C South Cedros Ave. Solana Beach, CA 92075

858.755.1497

info@surfstream.com

www.surfstream.com

SURFSTREAM MODELS

SURFSTREAM®



SURF TRAINING WAVE



DEEP WATER STANDING WAVE



LEFT OR RIGHT BARRELING WAVE

SPECS	MODEL SS3512	MODEL SS4016	MODEL SS4020
CHANNEL WIDTH ▶	12 ft 3.7 m	16 ft 4.9 m	20 ft 6.1 m
OVERALL FOOTPRINT ▶	22 x 65 ft 6.7 x 19.8 m	26 x 70 ft 7.9 x 21.3 m	32 x 75 ft 9.8 x 22.9 m
MAX. HOURLY POWER COST* ▶	\$30	\$40	\$50
POWER HP ▶	320	480	600
WAVE TYPES	feet meters rider capacity	feet meters rider capacity	feet meters rider capacity
TRAINING WAVE ▶	2.5 ft .76 m 5	2.5 ft .76 m 6	2.5 ft .76 m 8
STANDING WAVE ▶	3.5 ft 1.1 m 2	3.5 ft 1.1 m 3	3.5 ft 1.1 m 4
BARREL LEFT OR RIGHT ▶	3.5 ft 1.1 m 1	4 ft 1.2 m 1	4.5 ft 1.4 m 1

*POWER COST CALCULATED AT \$0.10 USD | KWHR

SurfStream® and PerfectSwell™ technology protected by US Patents 6,019,547; 6,629,803; 6,932,541; 7,326,001; 7,568,859; 7,815,396 with other US and international patents pending.

HIGH PERFORMANCE SURF PARK MODELS



From surf lessons on the training wave to full-scale surf exhibitions or contests on the barreling wave, create the ultimate surf destination with these high-power models.

SPECS		MODEL SS5024	MODEL SS6032
CHANNEL WIDTH	▶	24 ft 7.3 m	32 ft 9.8 m
OVERALL FOOTPRINT	▶	36 x 75 ft 11 x 22.9 m	40 x 80 ft 12.2 x 24.4 m
MAX. HOURLY POWER COST*	▶	\$55	\$65
POWER HP	▶	640	1000
WAVE TYPES		feet meters rider capacity	feet meters rider capacity
TRAINING WAVE	▶	2.5 ft .76 m 10	2.5 ft .76 m 12
STANDING WAVE	▶	3.5 ft 1.1 m 5	3.5 ft 1.1 m 6
BARREL LEFT OR RIGHT	▶	5 ft 1.4 m 1	6 ft 1.8 m 1

*POWER COST CALCULATED AT \$0.10 USD | KWHR

SURFSTREAM® SERVICES INCLUDED

Electronic Format Schematic Plans for:
SurfStream® Vessel and Pump Station Design
SurfStream® Equipment Installation Details
SurfStream® Operations and Maintenance Manual
Installation and Commissioning Supervision for 4 weeks

SURFSTREAM® EQUIPMENT SUPPLY INCLUDED

AWM shall supply Customer with the following Product Deliverables:

Submersible Pumps. All power standards available as an option.

Pump control system including variable frequency drives NEMA 4 Type 12 enclosure, Emergency Stop station, wall mount and Combined Remote Operators Station (ROS) with Emergency Stop, wall mount.

Patented modular high gloss molded fiberglass for surf channel and wave inserts. Choice of colors from approved color chart.

304 stainless steel pump support tubes.

304 stainless steel sump splitter plates and cones.

304 stainless steel pump chamber lids with cable exits.

Patented adjustable tank discharge aperture, 304 stainless steel and fiberglass.

304 stainless steel support framing for molded FRP wave generator channel.

Grating: Virginia Graeme Baker Act compliant I-4010 pultruded grating.
Exit floor grating fiberglass support kit.

Heavy Duty exit drain matting covering exit grating.

Tank chamber discharge grating and installation brackets.

18-8 stainless steel assembly hardware, bolts, lock nuts, washers, screws.
316 hardware on removable items. Patented quick release hardware.

Ten AWM approved soft surfboards and twenty AWM approved soft bodyboards supplied with Customer logos. Two custom hand-shaped pro surfboards.

Four LED lights and power supply.



SERVICES & EQUIPMENT SUPPLY SCOPE

SCOPE PROVIDED BY LOCAL POOL BUILDER NOT INCLUDED

The Product Deliverables shall not include, and Customer is solely responsible for paying and contracting for, the following:

Construction of pool | vessel including filtration, water treatment, circulation, drainage, lighting, and water (the "Pool | Vessel Facility").

Theming, dressings, railings, lighting (beyond supplied items), fencing, signage, furniture, walkways, and barriers. Painting, padding, or coating outside of SurfStream®.

Pump install and removal equipment after initial installation.

Electrical service and power distribution from mains to SurfStream® Control Panel.

World Wide Web access in control room.

Approved GFI power for installation, lighting, and events at the SurfStream® location

Access for handling equipment such as crane, fork lift.

Any building permits, fees, bonds, licenses, taxes, and submissions as required by local authorities, soils reports and surveying.

Storage of equipment on site beyond freight forwarders limit for possession of the shipping containers after arrival.

AMERICAN **WAVE** MACHINES

224C South Cedros Ave. Solana Beach, CA 92075

858.755.1497

info@surfstream.com

www.surfstream.com



AMERICAN WAVE MACHINES

224C South Cedros Ave.
Solana Beach, CA 92075
858.755.1497
info@surfstream.com
www.surfstream.com

Copyright 2011 American Wave Machines, Inc. SurfStream® and PerfectSwell™ logos are trademarks of American Wave Machines, Inc. SurfStream® and PerfectSwell™ technology protected by US Patents 6,019,547; 6,629,803; 6,932,541; 6,336,771; 7,326,001; 7,568,859; 7,815,396 with other US and international patents pending.