

3856



AMERICAN WAVE MACHINES

AMERICAN **WAVE** MACHINES

THE FUTURE OF SURFING



SURFSTREAM.COM





SURFSTREAM



ONE MACHINE MANY WAVES

DEEP WATER STANDING WAVE MODE

Modular insert

Reforming spoiler wave, oscillates
between green water face and
whitewater roller

Pitching option

Ideal for bodyboarding & surfing
up to 10 riders at once

SURF TRAINING WAVE MODE

Permanent feature

Basic surfing wave

Great for lessons

Fun for advanced surfers

Multiple surfers at once

BARRELING WAVE MODE

Modular insert—left or right breaking

Advanced surfing wave

Ideal for surfing events &
competitions







THE ULTIMATE SURF MACHINES

Authentic Surfing Experience

- Real surfboards with fins
- Deep cushion of water moving at natural speeds
- Skills that transfer to the ocean and rivers

Fully Adjustable

- State of the art programmed controls – options include left or right break, barrel, pitching, whitewater, reforming

Anyone Can Surf

- Beginners to pros
- Multiple riders at once

ABOUT AMERICAN WAVE MACHINES

THE FUTURE OF SURFING

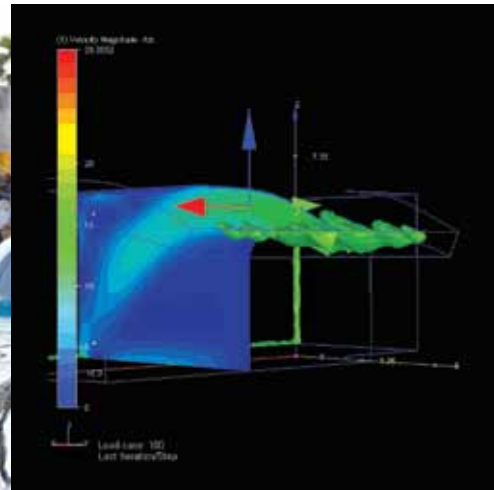
Whether for surf parks, waterparks, or cutting-edge research institutions, AWM is driven by an innovation imperative. With a legacy and deep roots in the surfing tradition AWM is committed to developing and producing only the highest quality wave systems. AWM's product development approach requires flexibility, a seasoned, multi-disciplined team, and frequent use of prototyping to verify analytically derived data. The result: perfect waves and an authentic surfing experience.



AWM founder's Uncle "Sonny" Charles Wright, the first US national surfing champion, in Mission Beach, CA, 1925, with his 130-pound redwood longboard



AWM Founder and President Bruce McFarland



CFD generated results for AWM proprietary wave pool design

AMERICAN WAVE MACHINES TECHNOLOGY



AN INNOVATOR IN ARTIFICIAL WAVE TECHNOLOGY

AWM delivers direct conceptual, design, engineering, supply, and installation of every available artificial surf technology category to the hotel resort, waterpark, and surf park markets. Its patented SurfStream®, the world's first standing wave machine, is a technology breakthrough that delivers real surfing and wave riding capabilities. The company also offers PerfectSwell™ wave and surf pools, the first pneumatic wave generating systems that create waves that behave like wind generated swells in the ocean.

PATENTS

Scope of work is done so under U.S. Patents, other patents pending 6,019,547 6,336,771 6,629,803 6,932,541 7,326,001 7,568,859 7,815,396



AMERICANWAVEMACHINES

224C South Cedros Ave. Solana Beach, CA 92075

858.755.1497

info@surfstream.com

www.surfstream.com

Whether your venue is in Manhattan Beach, California or Manhattan, Kansas, let your customers be immersed in the surf with the full range of AWM custom surf equipment and watch your revenue go through the roof!

SURFBOARDS



Standard 4'11" Black Ball Beater



AWM Custom Epoxy Thruster



Chopstick Mullet Neutron

AWM Custom Shapes

BODYBOARDS



HELMETS



RASHGUARDS





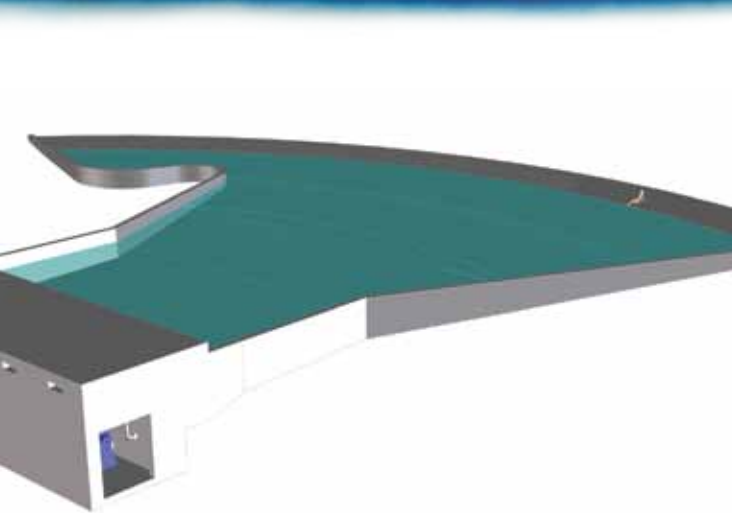
PS640 at Zoom Flume Waterpark, NY

TYPICAL SYSTEM CONFIGURATIONS

MODEL	PS330	PS640	PS648
NO. 10ft. CHAMBERS ▶	3	6	6
POWER HP ▶	75	200	300
WAVE SIZE ▶	2'	2.5'	4'
WAVE PER MINUTE ▶	15	15	15
POOL TYPE ▶	SMALL WAVE POOL	WAVE POOL	RIDEABLE WAVE

MODEL	PS1654	PS1680	PS2080
NO. 10ft. CHAMBERS ▶	16	16	20
POWER HP ▶	800	1000	1200
WAVE SIZE ▶	4'	6'	6'
WAVE PER MINUTE ▶	12	10	10
POOL TYPE ▶	SURF POOL	SURF POOL	BIG SURF POOL

SurfStream® and PerfectSwell™ technology protected by US Patents 6,019,547; 6,629,803; 6,932,541; 7,326,001; 7,568,859; 7,815,396 with other US and international patents pending.



AWM's patented PerfectSwell™ is an entirely new approach to generating traveling waves with the emphasis on the surfing experience: wave quality, duration, and frequency.

CUSTOM DESIGN

Specified based on desired size and type of surf and ride length

Adjustable wave heights, peel angles, and break points enabled by multi-chamber programming

Phased or sequenced wave applications

UNIQUE TECHNOLOGY

First air-powered system to mimic the velocity profile and circular particle motion of ocean surf

Creates up to 10 robust barreling waves per minute (older technology makes about 1 surfable wave per minute)

No moving parts in the water

ULTRA EFFICIENT

Compared to conventional technology:

Wave cycle completion every 5 seconds instead of every 60 seconds

1/10th the energy requirement per wave

AMERICAN WAVE MACHINES

224C South Cedros Ave.
Solana Beach, CA 92075
858.755.1497
info@surfstream.com
www.surfstream.com

Copyright 2011 American Wave Machines, Inc. SurfStream® and PerfectSwell™ logos are trademarks of American Wave Machines, Inc. SurfStream® and PerfectSwell™ technology protected by US Patents 6,019,547; 6,629,803; 6,932,541; 6,336,771; 7,326,001; 7,568,859; 7,815,396 with other US and international patents pending.